

Dallas Tuck Estate

FARM AUCTION

Sunday, May 17, 2015 • 11 a.m. • Lunch on Grounds

Location from Verdigre, Neb.: 12 mi. west from bank corner to 512 Ave., then 10 mi. north to 891 Rd., 1 mi. northwest to sale site; From O'Neill: 10 mi. east, 10 mi. north to county shed, 7 mi. east to 512 Ave., 10 north to 891 Rd., northwest to sale site; Verdell: From old elevator, 4 mi. south, 2 mi. west, 1 mile southwest to 891 Rd., northwest to sale site.

WATCH FOR AUCTION SIGNS

TRACTORS



JD 4630 - Diesel, cab, air, heat, 3-pt., dual hyd., front fenders, 20.8 x 38 tires, w/duals - nice!; JD 4320 - Diesel, cab, 3-pt., air & heat, front fenders, radio, new rubber, 8728 hrs., S#T613R-026388R - nice!; JD 4020 - Diesel, 3-pt., good rubber, S#T213R-189748R; JD 4010 - Diesel, 3-pt., new rubber, single hyd., S#21T56621; JD 3010 - Diesel, JD WF, new rubber, S#1T16635; JD 530 - Gas, NF, good rubber, purchased new, S#5308050; JD 60 - Gas, NF, P.S., good rubber w/old JD loader; 2 Sets of clamp on duals

GUNS

Remington .22 Model 34; Winchester Model 77 Auto .22; Winchester Model 1906 .22; Savage Model 16 7mm-08 Rem.; SKS 7.62 made in China; Stevens Model .22-410 over-under; Ruger .357 new model Black Hawk pistol; Iver John .22 target pistol Model 55A; (2) BB guns; F3 Record Weinberg pistol; 20 ga. Model SB single-shot; Stevens 12 ga. Model 77C pump
****ALL GUN LAWS WILL BE ENFORCED****

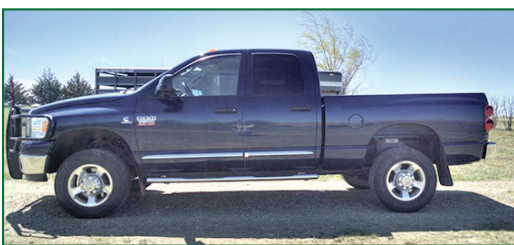
TOOLS

3/4HP Drill press; (2) Chainsaws; Bolt cutters; New 3 1/2-ton Prolift jack; Misc. electric motors; Bearing pullers; Old tire changer; Several hyd. jacks; Misc. power tools; Misc. hand tools; Makita chop saw; Lots more!

ANTIQUES/ COLLECTABLES

(2) Boxes of license plates, 1915 & up; Cream cans; Branded oil cans; Successful #9 incubator; Horse single & double trees; Goose & duck decoys & Animal Trap Co. mache decoys; Misc. tools; Primitive items; Wooden paint buckets; Platform scale; Large hand saws; Hand brace drills w/bits; Leather gun scabbard; (6) Live traps & misc. foot traps; Chicken waterers & feeders - nest; Misc. tins; Roller & ice skates; Leather recliner; S. Marino accordion; Underwood typewriter; Royal typewriter; 5 Gal. crock jug; Box of old ladies' hats; Wood ironing board w/attached glove board; Misc. old toys, books, puzzles, etc.; Wood wash basket; Storage bench; Metal beds; Stereo - 8 track, record, AM/FM, w/microphone system; Cloth feed & corn sacks; (2) Wooden hat boxes; View Master; 8-Track tapes; Boxes of books; Baseball bats, gloves & balls; Food dehydrator; Stock & dies for pipe; Wash stand; Wood butter churn; Hand water pumps; Baby crib; Chairs; Wooden wagon wheel; Zinc jar lids; Wood boxes & crates; Rocking chair; Several lanterns; Separator; (2) 5000 BTU air conditioners; (2) Boxes of gal. & qt. blue jars; Wool carder; Japanese tea set w/ cups; Enamelware; Wooden bowl; Old set blk. dishes; Aladdin lamp; Lots, lots more!

PICKUPS, TRUCKS, ATV, TRAILERS



2008 Dodge 2500 Diesel pickup w/BlueTec 6.7L Cummins turbo motor, 6-speed, crew cab w/short box, 72,000 miles (Nice!); 1994 Dodge Ram 2500 Cummins turbo diesel, 5-speed, high miles; 1978 Dodge Adventurer SE Auto (needs work); 1962 Ford F-600, 16' box-hoist, comb. box, 16,093 miles; 7' x 18' Trailer w/ H.D. dual axles; 7' x 16' Stock trailer; Polaris Sportsman 550 EFI 4-wheeler, AWD, 487 miles, like new; Yamaha 350 Big Wheel cycle; Suzuki TS 125 cycle



MACHINERY



JD 7200 Max Emerge 2 8-row planter w/dry fertilizer - always shedded; JD 7100 4-row planter w/dry fertilizer; Lorenz 8-beam 30' stack mover; JD 230 fold-down tandem disc w/large blades; New H&S high capacity rake 14-wheel; NH 116 windrower; NH 114 windrower; (2) JD 200 stackers; Gehl 100 grinder mixer (looks like new); Noble blade duck foot; NH 790 silage chopper; Landoll 12' field chisel; JD 22' C11 3-pt. field cultivator w/drag; JD #6 silage chopper; Gehl silage dump wagon; JD 400 3-pt. rotary hoe; JD 825 3-pt. cultivator; (2) JD semi mt. 5 bottom plows; (3) JD rotary mowers; JD #9 cycle mower w/several sickles; (2) Grain-o-Vators Series 55 & 30; Schwartz 760 feed wagon; "New" Frontier 3-pt. bale unwinder; 3-pt. Bale unwinder; NH 510 163 bushel manure spreader; 12-Wheel V rake; (2) Wagons w/hoist; JD 2-row front mt. cultivator; JD 3-pt. 4-row lister; (3) Old drills; MM 3 bottom plow; 4-Section field drag; Yard & half dirt scraper; Automatic mist blower; Elston gofer getter machine; (2) Cattle hay feeders on gears; End gate seeder; F25 loader w/attachments; F10 loader w/attachments; 2 Wheel windrow turner



MISC. ITEMS

JD quick hitch; JD steps; New & used tires; (5) 300-gallon fuel barrels on stands; Oil barrels & buckets; Several old radiators; Farmhand pump; Alum. ramps; Several sets tractor chains (some new in packages); Barbed wire & fencing equip.; (20) Cattle gates, all sizes; Several cattle & hog panels; Galvanized portable calf or hog catcher; Calf working chute; 16' Alley way; H & W portable corrals w/walk-through gate; (8) Portable cattle corrals; Boxes of new hyd. hose; 3-pt. Buzz saw PTO drive w/blade; Pallets & pallets of misc. items

For more information, call Rosie at (402) 668-7389; Darren at (605) 665-2329; or Randy at (402) 394-5795.

View pictures at: www.homesteadlandcompany.com.

TERMS: Full settlement day of sale. No items to be removed until settled for. I.D. required for bidding number. Not responsible for accidents or theft. Items sell "where and as is." Statements made sale day take precedence over anything printed or implied.

Sale conducted by:

VESELY
Auction Service



AUCTIONEERS:

- GARY VESELY: 402-847-3223 (day); 402-358-0611 (cell); 402-668-7226 (eve)
- DAN ROHRER: 402-841-1360