

2  
Rings  
Will Run!!

# FALL MACHINERY

2  
Rings  
Will Run!!

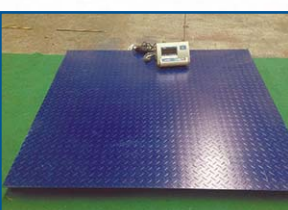
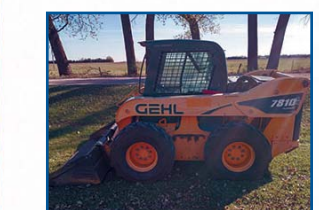
## CONSIGNMENT AUCTION

**SATURDAY • NOVEMBER 7TH, 2015 • 10:00 AM**

LOCATION: 1/2 MILE NORTHEAST OF O'NEILL, NE ON HWY 108 • Lunch & Portable Restrooms Available



**MAKE PLANS TO ATTEND THIS AUCTION!!**



### SKID STEER & TRACTORS

GEHL 5225 Skid Steer, Dsl, Aux. Hyd., Big Machine, w/ Bucket \* John Deere G Tractor \* John Deere A Tractor \* John Deere 3010 Tractor, Gas, WF, 3pt. \* IHC 656 Tractor, Gas, WF, New Rubber, Draw Bar, 3 Outlets \* John Deere 4010, Synchro, 3pt, 2 Valves, Factory Fenders \* Farmall M Tractor, PS, WF \* International 300 Utility Tractor, New Paint, Fresh Tune up, 3pt, Nice

### EQUIPMENT

Henke BH10 Feeder Wagon w/Scale \* Knight 2450 Augie 400 Cu Ft Feeder Wagon, Stainless, 3 Auger Discharge w/Scale \* JD Manure Spreader \* 3pt Spring Tooth Harrow \* 3pt Fertilizer Spreader \* Bale Spear \* BJM Grain Cart w/ Extension & Side Auger \* (2) M&W 300 BU Gravity Wagons \* Dual 325 Loader w/ Pump & Bucket \* Dual 5' Bucket & Grapple \* 3pt Bale Fork \* AC 6' 3pt Spring Tooth \* Koyker Super K Loader \* Straight Arm Loader w/5' Bucket \* Set Pallet Forks \* Hesston 30 Load Mover \* IHC 120 Mower, 9' Bar \* John Deere 248 Loader w/Grapple \* 3pt. Bale Spear \* PT Sprayer \* PT Harrow \* 3pt. Spring Tooth Harrow

### LIVESTOCK EQUIPMENT

(60) Continuous Fence Panels, 20', 6 Bar w/Clips & Connectors \* (40) 12' Portable Panels \* 3pt. Hyd. Bale Unroller \* Cattle Loading Chute \* Small Head Gate \* Cedar Line & Corner Posts \* 10' Round Stock Tank \* =7 Ton Bulk Bin

### HAY

(60) Bales of Good Net Wrapped Prairie Hay Round Bales, 1600-1700# Ave. \* (25) Small Square Bales of Straw \* (30) Small Square Bales of Alfalfa \* More By Sale Time

### SKID STEER EQUIPMENT

Unused Lowe 750 Hyd. Post Hole Digger w/9", 12" & 15" Augers \* Unused Stout Brush Grapple 66-9 \* Unused Stout Brush Grapple HD72-4 Close-Tine \* Unused Stout Brush Grapple XHD84-6 \* Unused Stout Tree & Post Puller \* Unused Stout Walk-Through Pallet Forks 48" Forks \* Unused Stout Full-Back Pallet Forks, 48" Forks \* Unused (4 ) 10-16.5 Maxam Skid Steer Tires, 10-ply \* Super HD Tree Grapple \* (3) 94" Hyd, Angle Snow Pushers, New

### BUILDINGS & NEW TOOLS

30'x65'x15' Peak Ceiling Double Door Storage Building, 12'x12' End Doors \* 20'x30'x12' Peak Ceiling Storage Shelter, Roll Up Door \* (2) 16'x22' Marquee Event Tents \* (2) 10'x20' Storage/Party Tent Shelters \* 10' (20) Drawer Heavy Duty Work Bench w/40" Peg Board Wall, Stainless Steel Drawer Panel \* Heavy Duty Tire Changer, 110V, Rim Clamp, Bead Breaker \* (10) 12'x20' Insulated Tarps \* 10" Compound Miter Saw \* 5 Ton Log Splitter \* 3 Ton Heavy Duty Chain Hoist \* (2) 2000Lbs 12V ATV Electric Winches \* 1 1/2 Ton Lever Hoist \* (10) 2"x27' Ratchet Tie Downs \* (9) 3"x30' Recovery Tow Straps \* 210K BTU Kerosene Air Forced Heater \* 170K BTU Propane Air Forced Heater \* 20FT Heavy Duty Bi-Parting Wrought Iron Driveway Gates \* 10 ton Hydraulic Punch Driver \* 10 Ton Digital Floor Platform Scale 78" plate w/Electronic Head

### VEHICLES & TRAILERS

1988 Ford F-150, 2WD \* Travalong 20' GN Trailer, Enclosed, Ramp Gate \* 14' HD Flatbed Trailer, Tandem Axle \* 1980 Chevy 1/2 T Pickup, 4x4, 4spd \* S&S 6x16 BP Livestock Trailer \* Yamaha 340 Snowmobile, Runs \* 2 Wheel Trailer

### MISCELLANEOUS

(7) Loads of Cut & Split Firewood, on Trailers \* 4000 Watt Gas Generator \* (3) Knipco Heaters \* Tire Chains \* Pickup Topper \* Vise \* Vehicle Luggage Rack \* Chevy Dually Pickup Box \* Gas Powered Snow Blower w/Chains \* 7'x16' Steel Garage Door w/Hardware \* Tripod Trailer Stabilizer \* 12V Post Hole Digger \* Elec. Garage Door Opener \* 16" & 17" Tires \* Rhino Ramps \* Trailer Load of Items from an Estate \* Set 16" GM 6 Bolt Alum Wheels & Tires \* David Bradley Garden Tractors w/Attachments, Need Restoration

NOTE: This is a very early listing and we expect much more by sale time. 2 Rings Will be used, so plan accordingly. This will be a Very Nice Auction with a Wide Variety of New & Used Equipment.

AUCTION SERVICES BY:

**M&M AUCTIONS, LLC • O'NEILL, NE 68763**

[www.mmauctionsllc.com](http://www.mmauctionsllc.com)

AUCTIONEERS:

Matt McKay 402-340-1209 • Mark Durre 402-340-4142

TERMS: Cash or Good Check Sale Day, Nothing Removed Until Settled For, Everything Sells As Is Where Is. NOT Responsible For Accidents, Lost or Stolen Merchandise. Advertising believed to be accurate, However, NOT Guaranteed. CHECKOUT PERSON AT THE GATE FOR PROOF OF PAYMENT.